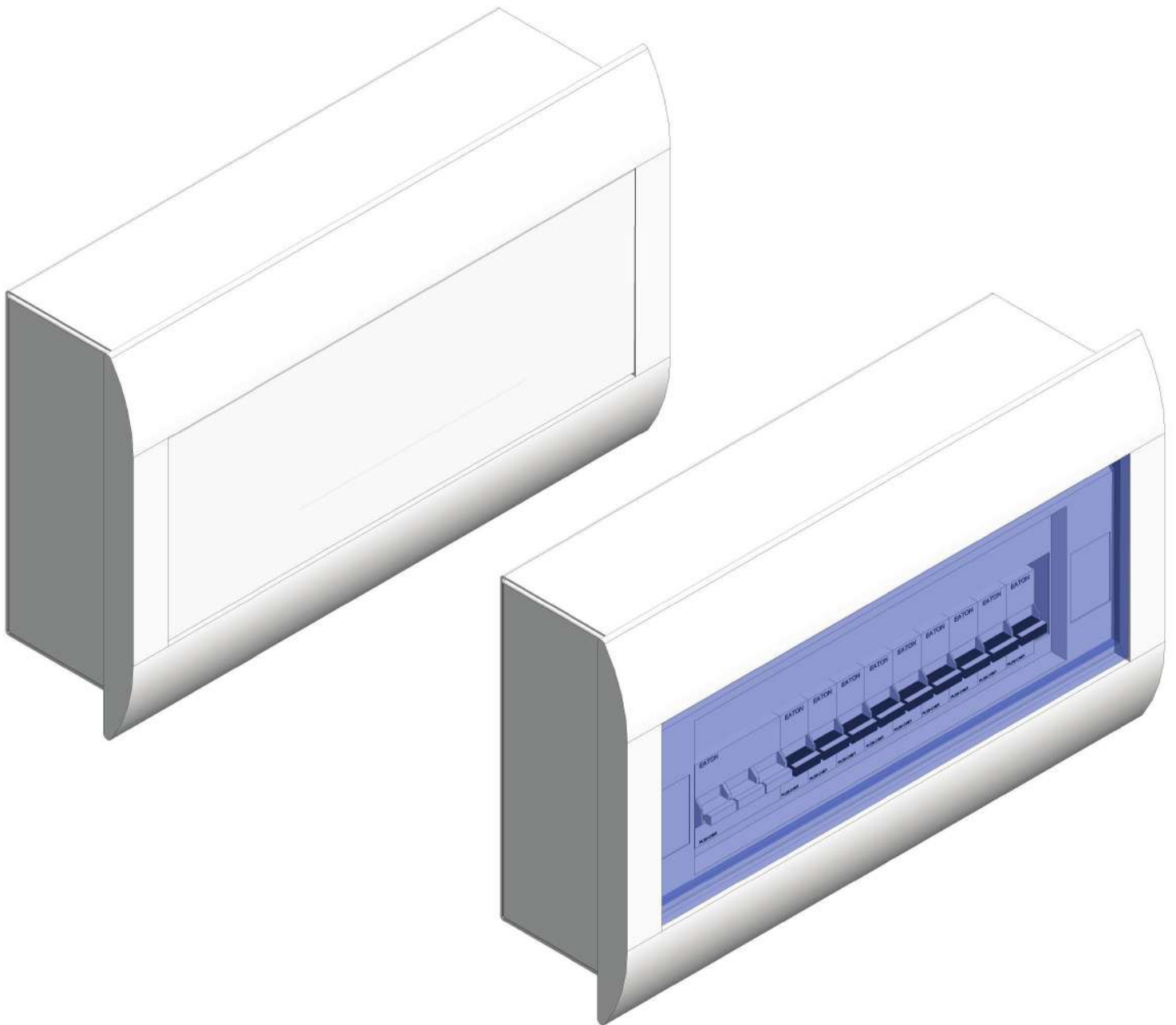


# powerbox<sup>®</sup>

## THERMO PLASTIC PANELBOARDS



CERTIFICATION  
INTERNATIONAL

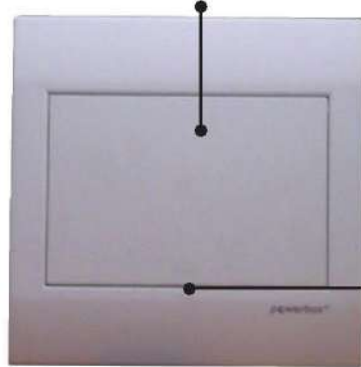
ISO 9001:2008  
CERTIFIED COMPANY

# THERMO PLASTIC PANELBOARD

FRAME AND COVER



HORIZONTAL SWING - UP COVER



PRESS TYPE DOOR LATCH



TOP



NEUTRAL MULTI-TERMINAL

GROUND MULTI-TERMINAL

REMOVABLE DIN RAIL



POWDER COATED MILKY WHITE COLOR  
• GALVANIZED STEEL ENCLOSURE (1.2 mm)



SIDE

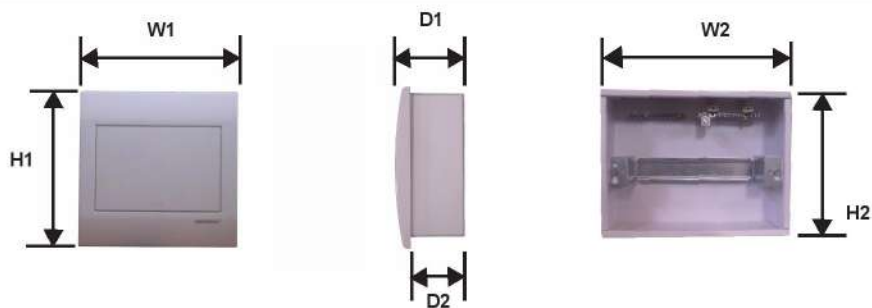
BOTTOM



## TECHNICAL SPECIFICATIONS

Degree of Protection	: IP40
Rated Current	: Up to 125 Amps.
Rated Operational Voltage	: 230 / 400 VAC
System Compatibility	: 1 Phase + N + G 3 Phase + N + G
Mounting Type	: Flush Mounted
Frame & Cover	: Thermo Plastic Materials Self Extinguishing and Heat Resistant
Enclosure	: Galvanized Steel Sheet 1.2mm Thick
Color	: Milky White

# DIMENSIONS



NUMBER OF WAYS (1 POLE MCB)	H1	H2	W1	W2	D1	D2
4 Ways	170	150	155	142	95	77
6 Ways	214	190	215	190	95	77
9 Ways	214	190	270	242	95	77
13 Ways	214	190	342	314	95	77
16 Ways	214	190	377	350	95	77
18 Ways	214	190	432	405	95	77
20 Ways	214	190	462	440	95	77
26 Ways	420	395	322	295	95	77
32 Ways	420	395	377	350	95	77
40 Ways	420	395	447	420	95	77
48 Ways	630	604	377	350	95	77
60 Ways	630	604	447	420	95	77

# VARIANTS AVAILABLE (1 POLE WAY)

4 WAYS



6 WAYS



9 WAYS



13 WAYS



16 WAYS



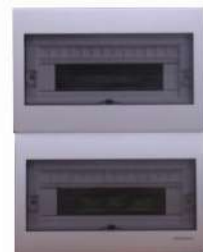
18 WAYS



20 WAYS



26 WAYS  
DOUBLE ROW



32 WAYS  
DOUBLE ROW



40 WAYS  
DOUBLE ROW



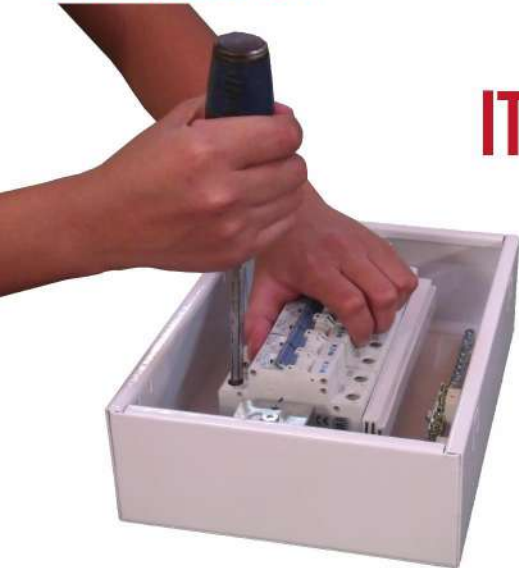
48 WAYS  
TRIPLE ROW



60 WAYS  
TRIPLE ROW



# INSTALLATION



**IT'S EASY TO INSTALL AND UNINSTALL!**  
SUITABLE TO ACCEPT ANY BRAND OF DIN RAIL MOUNTED MCB'S.

# COMB BUSBAR TECHNICAL SPECIFICATIONS

Rated Operational Voltage	: 400 VAC
Max. Busbar Current	: 125 Amps
Max. Current Per Feeder	: 63 Amps
System Compatibility	: 1 Phase + N + G 3 Phase + N + G

COMB BUS



# ORDERING CODE

## COVER VERSIONS

- OPAQUE DOOR - E
- TRANSPARENT DOOR - M

## NUMBER OF WAYS

- 4 W
- 6 W
- 9 W
- 13 W
- 18 W
- 20 W
- 26 W
- 32 W
- 40 W
- 48 W
- 60 W

**PB4W - E - NG - 40 - FM**

## NEUTRAL & GROUND

- NG - W/ NEUTRAL & GROUND
- N - W/ NEUTRAL ONLY
- G - W/ GROUND ONLY

**MOUNTING TYPE: FLUSH MOUNTED**

**DEGREE OF PROTECTION: IP40**

# X-Pole PLS MCB PFIM ELCB / RCCB

## PLS..., PLHT Miniature Circuit Breaker



Coloured Toggles per Rating

6A	Green
10A	Red
13A	White
16A	Light Blue
20A	Dark Blue
25A	Yellow
32A	Pink
40A	Black
50A	White
63A	Orange

## Safety Wire Guides



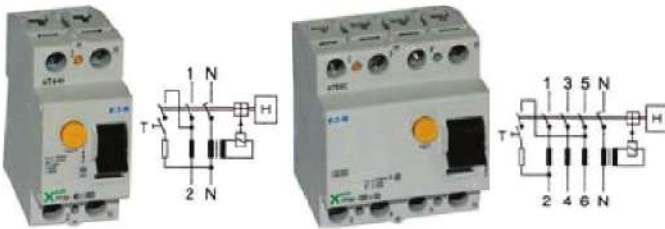
Leads for ON/Off Position



## TECHNICAL SPECIFICATIONS

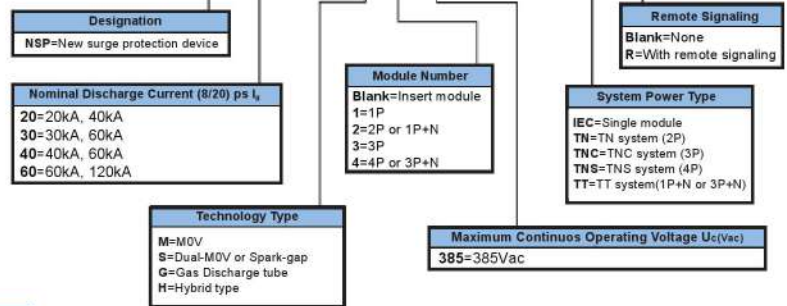
	PLS6	PLSM	PLS6-DC	PLHT
<b>Electrical</b>				
Design according to	IEC / EN 60898	IEC / EN 60898	IEC / EN 60947-2	IEC / EN 60947-2
Rated Voltage = AC	230 / 400V	230 / 400V	-	230 / 400V
Rated Voltage = DC (per pole)	48V	48V	250V	60V
Rated Frequency	50 / 60Hz	50 / 60Hz	50 / 60Hz	50 / 60Hz
Endurance (operating cycles)	>8,000	>8,000	>8,000	>20,000
Characteristics	B,C,D	B,C,D	C	B,C,D
Rated breaking capacity according to IEC / EN 60898	6 kA	10 kA	6 kA	
Ultimate Short circuit breaking capacity according to IEC / EN 60947-2				
Characteristics B,C				
In = 20-63A	10 kA			25 kA
In = 80-100A				20 kA
In = 125A				15 kA

## PFIM Residual Current Circuit Breaker



## NSP Surge Protection Device

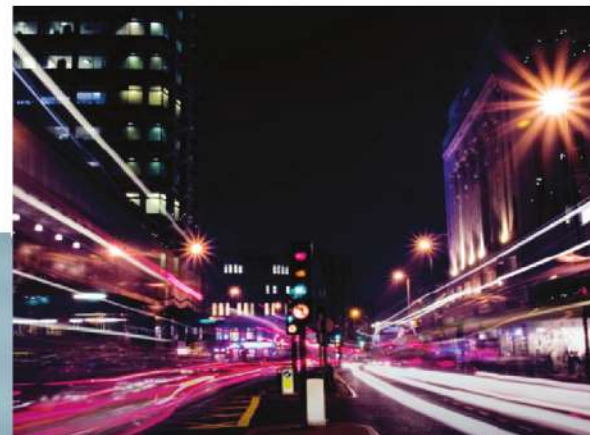
### NSP 30 M 4 385 TNS R



## TECHNICAL SPECIFICATIONS

### PFIM

<b>Electrical</b>	
Design according to	IEC / EN 61008
Rated Voltage Un	230 / 400V, 50Hz
Rated tripping current I <sub>n</sub>	30, 100, 300, 500mA
Sensitivity	AC and pulsating DC
<b>Endurance</b>	
Electrical comp.	>4,000 operating cycles
Mechanical comp.	>20,000 operating cycles
<b>Mechanical</b>	
Tripping temperature	-25°C to +40°C
Degree of protection, built-in	IP40



Safe and Reliable Circuit Protection  
State-of-the-art Power Distribution

# Protect People and Property

# *Simply Better*

*Think Safety, Think powerbox<sup>®</sup>*

## **MANUFACTURING PLANT ADDRESS**

TOTAL POWER BOX SOLUTION INC.  
CAVITE LIGHT INDUSTRIAL PARK  
BRGY. MAGUYAM, SILANG, CAVITE PHILS. 4118

## **CUSTOMER CARE SERVICE HOTLINE**

TEL: (02) 806 9716  
(046) 686 5446

## **TECHNICAL SERVICE HOTLINE**

MOBILE: 0922 - 874 - 5355  
0922 - 811 - 8120  
0922 - 812 - 3619

## **WEBSITE**

[WWW.POWERBOXSOLUTIONS.COM](http://WWW.POWERBOXSOLUTIONS.COM)

The information contained is subject to change without prior notice due to continued research and development.